

PHILIPS

UID8450/10

Wireless switch, dim



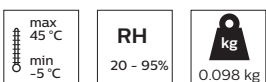
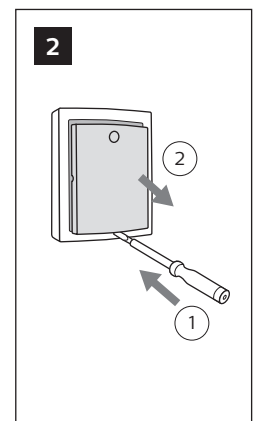
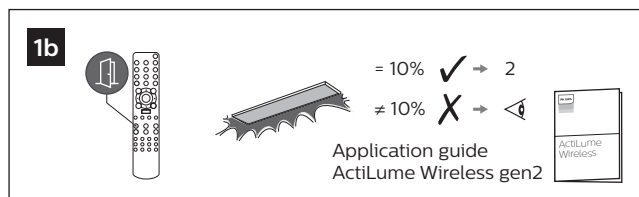
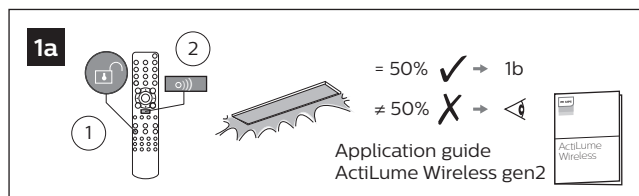
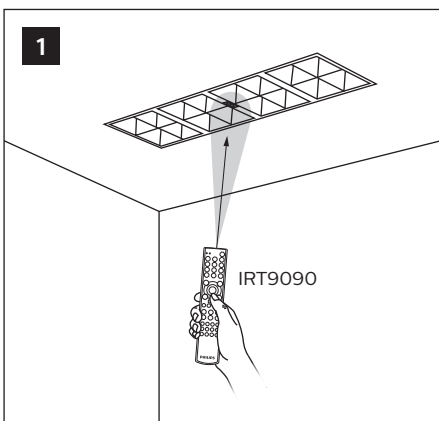
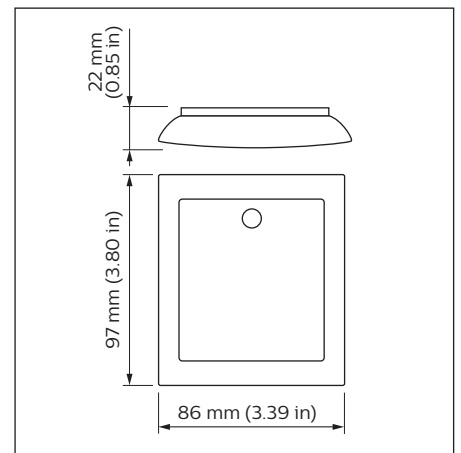
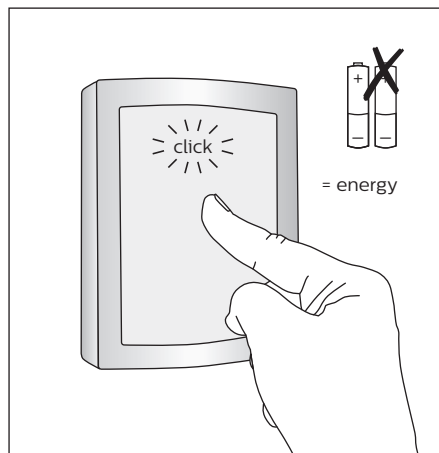
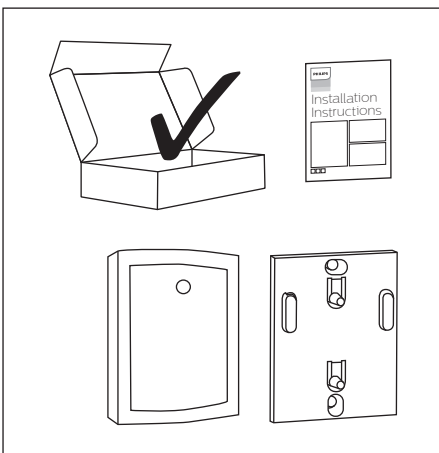
Installation Instructions

Instructions d'installation
Instrucciones de instalación

Istruzioni per l'installazione
Installatie-instructies

Installationsanweisungen
インストール手順

安裝指示书
إرشادات التركيب



3

- (EN) Select correct channel
- (ES) Seleccionar el canal apropiado
- (FR) Sélectionnez le canal approprié
- (DE) Den richtigen Kanal wählen
- (NL) Selecteer juiste kanaal
- (IT) Selezionare il canale corretto
- (PL) Wybierz prawy kanał

3a

Flash

Flash

✓ → 4

X → 3b

+ (2) 10 sec.

3b

Flash

Flash

✓ → 4

X → 3c

+ (2) 10 sec.

3c

Flash

Flash

✓ → 4

X → 3d

+ (2) 10 sec.

3d

Flash

Flash

✓ → 4

X → Application guide ActiLume Wireless gen2

+ (2) 10 sec.

4

IRT9090

4a

= 50% ✓ → 4b

≠ 50% X → Application guide ActiLume Wireless gen2

4b

click

4c

test

off ✓ → 4d

on

4d

(1)

(2)

5a

5b

(1)

(2)

